

Corporate Profile



Innovating Energy Technology

Through our pursuit of innovation in electric and thermal energy technology, we develop products that maximize energy efficiency and lead to a responsible and sustainable society.



CEO Message

Fuji Electric Asia Pacific contributing to regional society through Energy Related Business

Established since 1923, Fuji Electric group has made broad contributions to the world industrial and social infrastructure.

Fuji Electric with its leading edge power electronics technology is in pursuit of developing and innovating energy technology.

Fuji Electric Asia Pacific was established in 1989 as Fuji Electric's sales and marketing hub in South East Asia region.

Asia-Pacific region is one of the most important and fast growing markets in the world, we are expanding our energy related business in this region by enhancing our Sales, Marketing, Engineering & Technical support.

We focus on "Power electronics", "Industrial Systems", "Energy Saving Solutions" and "Lifecycle Service" in Asia Pacific region, by creating high value-added, environmentally friendly products that use energy with maximum efficiency.

The people at Fuji Electric Asia Pacific are united in our desire to promptly meet the diverse needs of our customers by bringing together their vast array of individual talents.



Company Overview

“Power Electronics”=“Technology to Unlock the Potential of Electricity” is our foundation.

Fuji Electric has created a series of new business more than 90 years since our founding. A Single theme has linked each of these – that of “Power Electronics Technology” combining power semiconductors, circuits, control systems, and similar technology.

Our core business concept is to “provide more creative value” to our customers and society in general.

With our brand statement “Innovating Energy Technology”, Fuji Electric is striving to develop new technologies and innovations that benefit the entire world.

Following our group mission, Fuji Electric Asia Pacific is focusing on energy related business in South East Asia, Oceania and Middle East region.

We focus on Power Electronics, Industrial systems, Electronic Devices in Asia Pacific region, such as Variable Speed Drives(VSD), Uninterruptible Power supply(UPS), Electrical Distribution & Control components and Power Semiconductors etc.

By providing power electronic application products to markets that demand efficient use and quality of energy, we contribute to the realization of a safe, serene, and sustainable society.

We offer "Energy Saving Solutions" and "Lifecycle Service" connected to the production line and industrial customers. Our solutions focus on optimizing the energy supply for the entire plant while reducing green house gas emission.

As a specialist of energy creation, energy savings and energy management, Fuji Electric will continue to provide products and solutions to meet customer demands and contribute to the creation of responsible and sustainable societies everywhere we do business.





Energy creation

Environment-friendly
clean energy

Energy management

Optimizing
energy creation
and **energy saving**

Energy saving

Using energy efficiently

Power electronics unlocks the potential of electricity

Power electronics

Power semiconductors

Electrical distribution and control
(ED&C) components

Fuji Electric's Energy-Related Business

With power electronics technology and thermal energy technology as core technologies, Fuji Electric contributes to the creation of responsible and sustainable societies through its five business sectors: Power and Social Infrastructure, Industrial Infrastructure, Power Electronics, Electronic Devices, and Food and Beverage Distribution.

Power and Social Infrastructure

By integrating environmentally friendly electric power plants and energy management, Fuji Electric will contribute to the realization of a society of smart communities.

- Steam turbine
- Power generation facilities
- Fuel cells
- Cluster Energy Management System
- Electric power storage systems



Steam turbine



Cluster Energy Management System (CEMS)

Industrial Infrastructure

Fuji Electric supplies diverse customers in the fields of industry with “energy savings” and “lifecycle services” for production lines and infrastructure equipment.

- Substation equipment
- Rectification equipment
- Drive control systems
- Industrial electric heat
- Instrumentation and control systems



Switching devices



Measurement instruments

Power Electronics

Fuji Electric supplies products that incorporate power electronics technology to improve the efficiency and stability of energy.

- General-purpose and industrial Variable Speed Drives
- Synchronous motor systems
- Systems for EV (Quick chargers)
- Uninterruptible power supply systems
- Magnetic switches / Molded-case circuit breakers



General purpose Variable Speed Drives



Uninterruptible power supply systems



Magnetic switches

Electronic Devices

Fuji Electric supplies power semiconductors and other essential devices to the fields of industrial equipment, automobiles, information equipment, and new energy.

- Power semiconductors
- Organic photoconductive drums
- Magnetic disks



High power IGBT modules



Power MOSFET

Food and Beverage Distribution

With our freezing technology at the core, we integrated mechatronic technology and IT to offer optimal products and solutions to our customers.

- Vending machines
- Food service equipment
- Freezer and refrigerated showcases
- Energy-saving stores
- Distribution systems



Vending machine



Freezer and refrigerated showcases



Drive & Automation

Design and manufacture of more energy efficient products



Fuji Electric provides our customers with high quality, safe and technologically transparent, next generation automation systems which are environmentally friendly. Our innovative solutions to problems and highly reliable products are developed from many years of experience.



General Purpose Variable Speed Drives

Fuji's Variable Speed Drives contribute to automatization, labour saving and energy saving in machines and facilities in industrial fields. They are all compact, yet powerful, ranging from high performance torque vector control models to simplified models. Our full line of Variable Speed Drives is capable of satisfying every demand of variable speed control.



Premium Variable Speed Drive
FRENIC-VG Series



Variable Speed Drive for HVAC, Fan & Pump
FRENIC-HVAC / AQUA

New



Variable Speed Drive for general applications
FRENIC-Ace



2013 Best Servo Drive / Motor Provider at Asian Manufacturing Award

Low Voltage and High Voltage Squirrel-cage Motors

Fuji Electric offers a wide range of high quality and superior durability general-purpose squirrel case motors, explosion-proof motors and high efficiency synchronous motors through years of experience.



AC Servo System ALPHA 5 Series

Fuji Electric provides a wide variety of servomotor systems, ranging from quick response ultra compact models to large capacity models, for applications such as industrial machines, semiconductor manufacturing equipment. Further flexible control becomes possible with motion control use function blocks installed into PLCs.

Human Machine Interface (HMI)

Fuji's Programmable operation displays are capable of machine operation, production line management monitoring and a wide range of other applications, and offer a rich variety of screen sizes and display functions including networking, animation and video.



Programmable Logic Controller (PLC)

Fuji's PLCs feature high processing speeds and compatibility with various networks for increasingly complex, high speed and advanced machine and measurement control, and our scalable multicontrollers exceed the conventional PLC framework.



High reliability and simple maintenance drives utilising the latest power electronics

Fuji's medium voltage drives are used for direct variable speed control of medium voltage motors. The industry's smallest class Variable Speed Drives achieved through significant panel size reduction, made them the ideal Variable Speed Drives for power sources and motors. They greatly raise the efficiency and power factor, stabilise motor operation and conserve energy.

Environment-friendly Variable Speed Drives

High reliability and simple maintenance Variable Speed Drives utilizing the latest power electronics such as 3-level Variable Speed Drives, mounting of special MPU and no need for harmonic filter/power-factor regulating capacitor.



Uninterruptible Power Supply (UPS)



UPS7000HX-T4



UPS7700F

Fuji's UPS and power solutions have the best product specifications with the latest technology.

Our products are available in the 72 VA to 2000 kVA range, for single modules. For higher ratings, these can be paralleled to deliver 12000 kVA.

Fuji Electric's high efficiency UPS helps in reducing costs, weight, footprint and heat.

Fuji Electric's UPS is the ultimate solution for data centre and industry applications.



Semiconductors

Creating innovative electronic devices that spur advances in industrial equipment, IT device and automobile

The Electronic Devices Group provides groundbreaking electronic devices to realize energy conservation and reduced environmental burden by contributing to advances in industrial equipment, IT device and automobile. Driven by a desire to constantly lead the industry in technological innovation, we are creating an exciting lineup of innovative devices. We strive to be a reliable partner to our customers companies that must stay in touch with their markets through the successive, rapid development of new products, and we promise to provide market-leading, world-class electronic devices and services.



Semiconductors

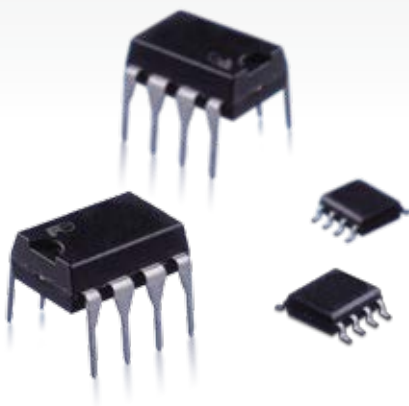
Main Products: PowerICs / IGBT modules
Power discrete devices / Hybrid devices /
Pressure sensors



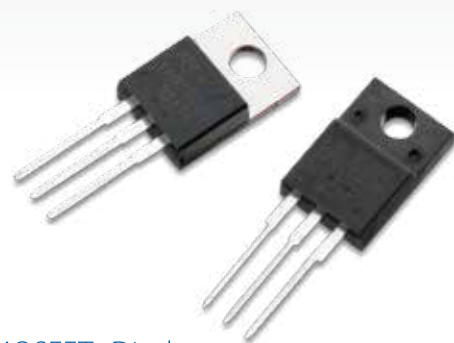
Small Capacity IPM



Automotive IGBT-IPMs



Power ICs



Power MOSFETs Diodes



Electrical Distribution & Control

Wide range of Distribution & Control products for buildings, industries and OEMs.

Fuji Electric offers power distribution and control equipment such as magnetic switches and molded case circuit breakers for manufacturing equipment at plants and other machinery so as to meet our customers' energy efficiency and safety needs.



Molded-Case Circuit Breaker / Earth Leakage Circuit Breaker

The G-TWIN compact and high performance MCCB & ELCB; it's in the world to adopt switching for dielectric test. This series is also conforming to all major international standards, and had lower environmental impact by conforming the RoHS Directive.

Magnetic Contactor

The highly trusted NEO SC Series has captured the leading market share in Japan and conforms to global standards. Incorporating the latest technology, these switches also have excellent safety characteristics and are environmentally friendly.



Air Circuit Breaker



Vacuum Circuit Breaker



F-MPC Series

This is a digital multi-circuit multi-meter relay that condenses measuring functions required for electric power monitoring, electrical equipment monitoring, electric quality monitoring, displays and stores measured data and etc., in a single unit.





Instrumentation

Providing the best measurement system solution

Temperature Controllers

Digital temperature controllers that support all types of temperature control with four models, including the dissemination and high end models and the module type.



Microjet Recorders

A product of Fuji's advanced technology for clear and continuous 6-colour inkjet recording, incorporating piezoelements for use in industrial applications.



Paperless Recorders

PC support software for display of storage data on CRT of PC and PC loader software for parameter settings are delivered as standard accessories, with functions of root extraction, subtractions, integration and Fvalue calculations.



Gas Analyzers

FUJI developed the first infrared gas analyzer in Japan to use mass flow sensors, commonly used to monitor the atmosphere to help maintain a cleaner natural environment.



Pressure Transmitters

FCX series electronic transmitters, with a key component of a silicone sensor with a micro level capacitance, ensure highly precise measurements of pressure, differential pressure, fluid flow and liquid levels.



Flowmeters

Duasonics, the world's first new concept ultrasonic flowmeter utilising the pulse Doppler method and transit time method for non intrusive flow measurement from the outside of piping.



Stack Gas Analyzer

The first direct insert-type gas analyzer that enable simultaneous and continuous high speed measurements of concentrations of gases (HCL, NH3, CO, CO2 & O2) in two seconds



Substation & Distribution

Realisation of a transparent and environmentally conscious society

When manufacturing, we emphasize safety and a transparent manufacturing process with the aim of providing customers with a variety of environmentally friendly, energy saving products to benefit industry and society. Our goal is to contribute on creating a comfortable industrial society, whose members can live their lives safely and comfortably. This is achieved through advanced electronics technologies developed by Fuji Electric that have allowed it to design and manufacture appropriate sensors and IT systems & components that detect hazards, connect equipment and devices, store, send and analyse data.



***Environmentally -
friendly and safe
technologies and products
provide customers with next
generation solutions***





Gas Insulated Switch Gear



IEC 60076 - 5

Oil Immersed Transformer



IEC 60076 -11

Cast Resin Transformer



IEC 62271- 200

Medium Voltage Switchboard



IEC 61439

Low Voltage Switchboard

Plant Engineering

Providing a wide range of solutions for your various issues, from management to operations.

Thermal power plant



Thermal power plant booster transformers

[Transformers]

To deliver the power generated by a power company over distances to where everyone needs it, it is necessary to boost the voltage in order to reduce energy losses. Then after the power is transmitted, it is necessary to gradually step down the voltage. The equipment that does this is called a transformer. Depending on the voltage users need and where they need it, the voltage is changed to what will ultimately be used.



500 kV Substation



300 kV Phase segregated type gas-insulated switchgears

275~500 kV



Hydroelectric power plant boost transformers

[Switchgears and circuit breakers]

When any abnormality occurs to the electrical flow in the transmission grid, such as lightning, there is a switching device called a switchgear that is used to break the flow of electricity. It is like a large-size version of the circuit breakers people have in their homes, but requires sophisticated technology to break the high-voltage electricity.

Extra-high-voltage substation

[Converters and rectifiers]

Generated electrical power is transmitted as alternating current (AC) electricity, but there are industrial plant equipment and transportation facilities that require a direct current (DC) source of power. By using direct-current electricity, it is possible to supply electrical power to DC power users such as metal refineries, chemical manufacturers, and railways. Converters and rectifiers are the equipment that changes and controls the type of electricity.

Hydroelectric power plant

Plant substation

66 kV



72/84 kV Cubicle type gas insulated switchgears (GIS)



Fixed-type MCC VSD Panel

Large-scale plant



S-Formers

Medium-scale plant



FR3 Biodegradable transformers and pure water vaporization-cooling rectifiers for railways



Withdrawable -Type LV Switchgear



Shunt reactors

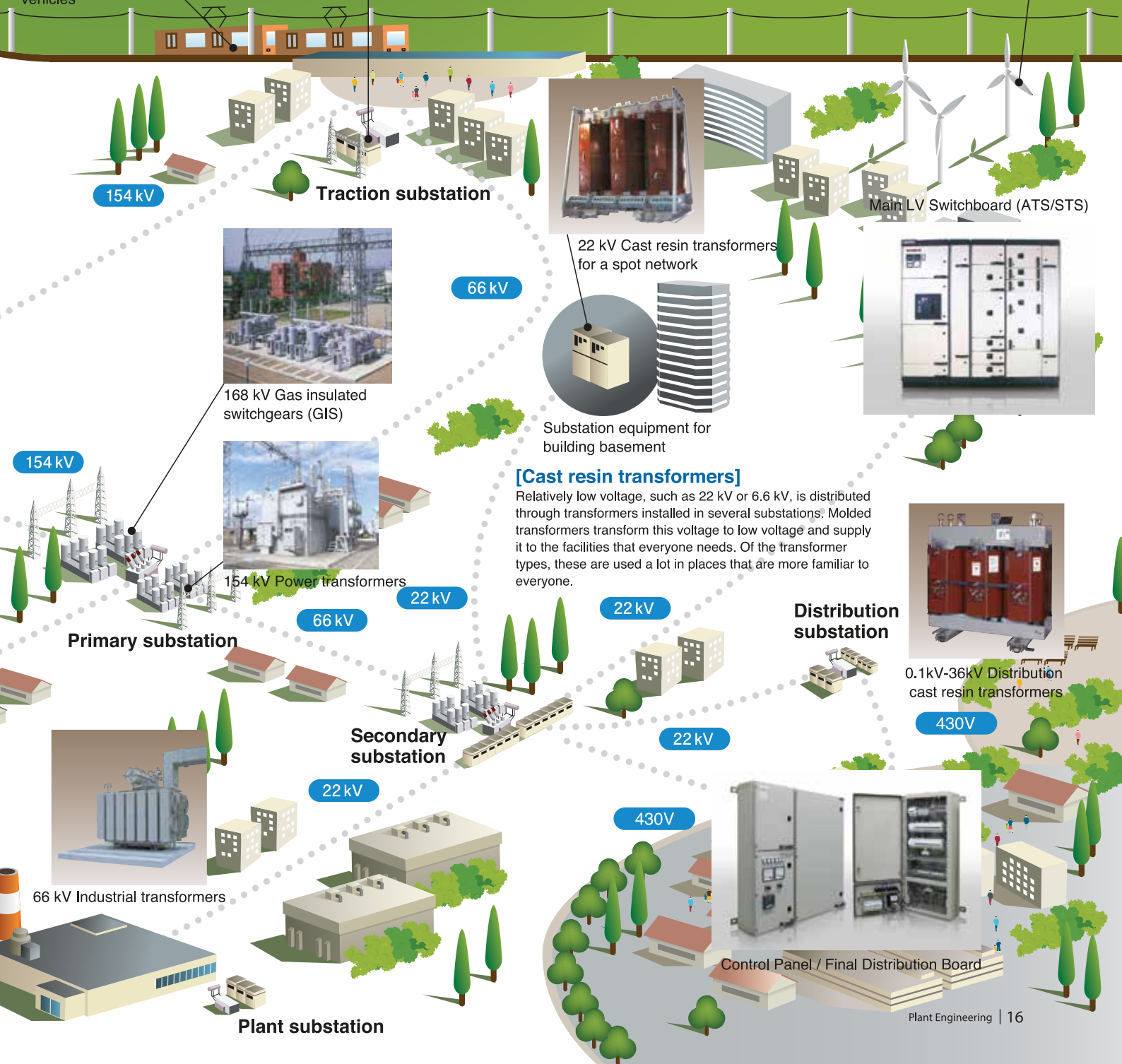
PDU (Power Distribution Unit)
RDU (Remote Distribution Unit)



72/84 kV Gas circuit breakers (GCB)



Transformers for vehicles



154 kV

Traction substation

66 kV



22 kV Cast resin transformers for a spot network

Substation equipment for building basement

Main LV Switchboard (ATS/STS)



154 kV

Primary substation



168 kV Gas insulated switchgears (GIS)

154 kV Power transformers

[Cast resin transformers]

Relatively low voltage, such as 22 kV or 6.6 kV, is distributed through transformers installed in several substations. Molded transformers transform this voltage to low voltage and supply it to the facilities that everyone needs. Of the transformer types, these are used a lot in places that are more familiar to everyone.

66 kV

Secondary substation

22 kV

Distribution substation



0.1kV-36kV Distribution cast resin transformers

430V

22 kV

Plant substation

430V

Control Panel / Final Distribution Board

66 kV Industrial transformers



Integrated Data Centre (IDC) Business

| | | |
|--|--|--|
| <p>Air conditioning</p> <p>F-COOL NEO F-COOL SPOT Outside air intake unit</p> | <p>Electric power</p> <p>Fuel cell Incoming and transforming UPS Private power generator</p> | |
| <p>Housing</p> <p>"Ecolo-panel" Container</p> | <p>One-Stop Solution</p> | <p>Peripheral facilities</p> <p>Server rack Monitoring camera</p> <p>Entrance and exit management</p> <p>N2 firefighting</p> <p>Seismic isolator</p> |
| <p>Power distribution</p> <p>Server intelligent distribution board Step-down transformer</p> <p>Rack-mounted UPS</p> | | <p>Management (Energy saving)</p> <p>F-DMS system Electricity measuring unit</p> |

Our Mission

Strived to be the market leader in providing unparalleled uninterruptible Business Continuity for all Critical Environment, from Data Centre, Telecommunications Centre, Clean Room, Research and Development Laboratory, Business Continuity and Disasters Recovery Centre, to Industrial Plant.

Our Dedication

Fuji Electric Asia Pacific IDC task herself to embark into the continual efforts of providing cost effective quality customized solutions, using latest technology, to suit clients' current and near future requirements.

Our Solutions

- »»» Turnkey Solution for Critical Environment
- »»» Wide Area Space Planning and Design
- »»» Smart Energy Management System
- »»» Facility Management
- »»» Service and Support



Energy Saving Solution

Fuji Electric has extensive experiences in energy auditing with more than 500 plants in South East Asia region and realized energy saving in wide variety of industries. We are committed to assists our customers in facilitating energy-saving concept and solutions for their process and facility in the plant and providing solution to have a shorter Return On Investment.

Step 1. Monitoring

Instrumentation equipment and system for collecting real time data on site.

- a) **Instrumentation** (Flow meter, pressure meter, temperature sensor etc)
- b) **Monitoring system** (F-MPC / PLC)
- c) **Open network / Open system** (F-MPC / PLC)
- d) **Highly functional data base and monitoring system** (Eco ANALYST / CitectSCADA)

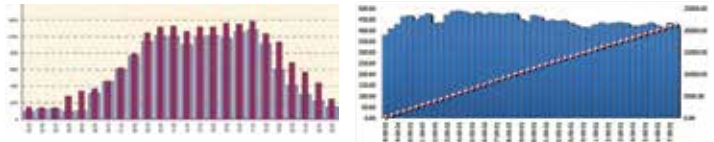


»»» Identify Current Operating Condition.

Step 2. Determine

Data Analysis of operating condition.

- a) **Energy management system**
(MainGATE / PPA)
- b) **Maintenance / Check system** (P.O.J)



»»» Determine solution through efficient analysis.

Step 3. Optimization

Applying energy saving solution and circulate PDCA cycle.

- a) **Fuji Electric Products**
(High efficiency Motor, LV & MV Variable Speed Drive, Cast Resin Transformer, Demand controller)
- b) **Optimal operating system of plant**
(MainGATE / Fe-TOP / BAS / BEMS)



»»» PDCA cycle by Fuji Electric products further contribute energy saving.



Diagnosis Services for Industrial Plant Equipment

Fuji Electric provides and suggests maintenance solutions base on products life cycles with our proprietary diagnostic technology, and promptly solve and provide solutions when emergency incident occurred.

- Environmental diagnosis and deterioration diagnostic services
- Installation environment diagnosis services for electrical facility equipment
- Deterioration diagnosis services using infrared thermography
- Live diagnostic services for in-service electrical equipment using infrared thermography
- Remaining life time diagnosis services for power distribution panel control wiring

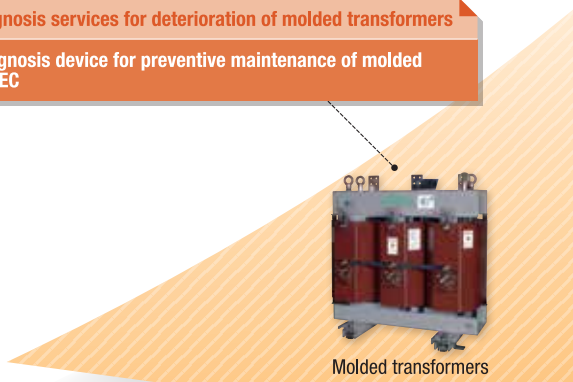
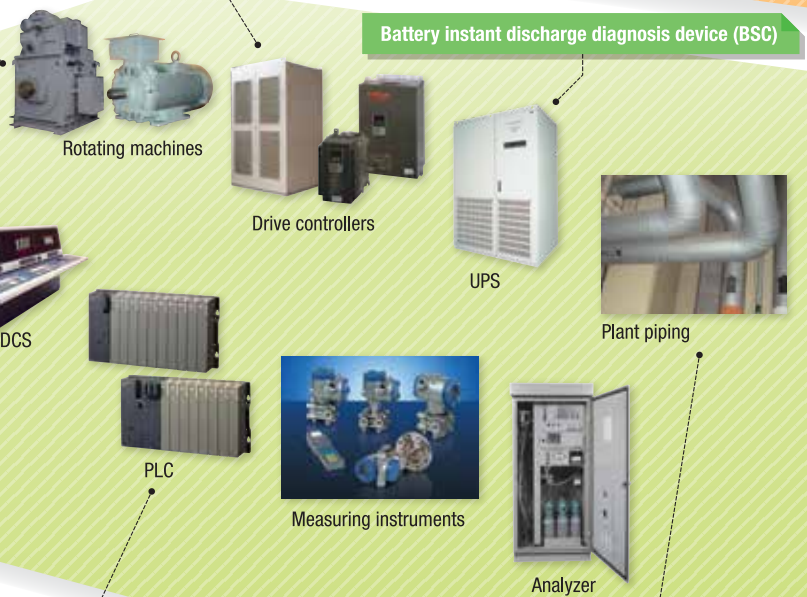
- High-precision remaining life assessment services for oil-filled transformers
- Dissolved gas analysis (DGA) for oil-filled transformers and testing of insulating oil properties
- Torque diagnosis services for on-load tap changers
- Deterioration diagnosis service for substation switchgear CB-MEC
- Simplified partial discharge diagnosis services for distribution panels
- Partial discharge diagnosis services for power distribution panels COPAS
- Deterioration diagnosis services for auxiliary relays AR-MEC
- MOLMOS optical diagnosis services for deterioration of molded transformers
- Partial discharge diagnosis device for preventive maintenance of molded transformers MOL-MEC

- Diagnostic services for adjustable speed drive systems
- Remaining service life assessment system for limited-life parts of general-purpose inverters
- Deterioration diagnosis system for environmental factors of general-purpose inverters

- Remaining life assessment services for High-voltage electric motors
- Reliability assessment for medium-voltage motors
- Insulation diagnosis for medium-voltage rotating machines
- ROPAS online partial discharge diagnosis services for medium-voltage rotating machines
- Physico-chemical diagnosis services for thermal deterioration of insulation
- Wireless diagnostic system for rotating machine vibration (Wiserot)
- Supporting the stable operation and improved operating cost of machining equipment ProHealth

- Diagnosis services for printed circuit boards by a sampling method
- Deterioration diagnosis for printed circuit boards
- Cleaning of printed circuit boards
- Coating of printed circuit boards
- Deterioration diagnosis for power supply units

- Equipment diagnosis services for information processing controllers



- Radiation transmission type pipe diagnostic equipment
- Radiation transmission type pipe thickness measurement equipment
- Furmanite composite repair services



Detection technology of air leak into condenser Leak Buste



Power generation facilities



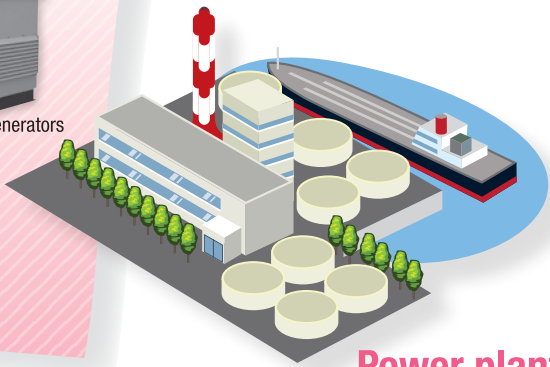
Emergency power generators



High speed circuit breakers



Extra high voltage switchgear



Power plants



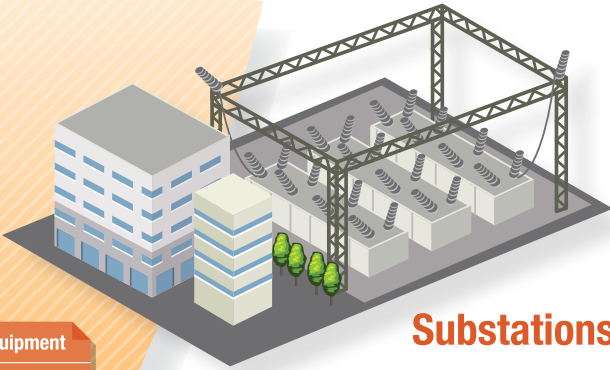
Oil-filled transformers



Circuit breakers

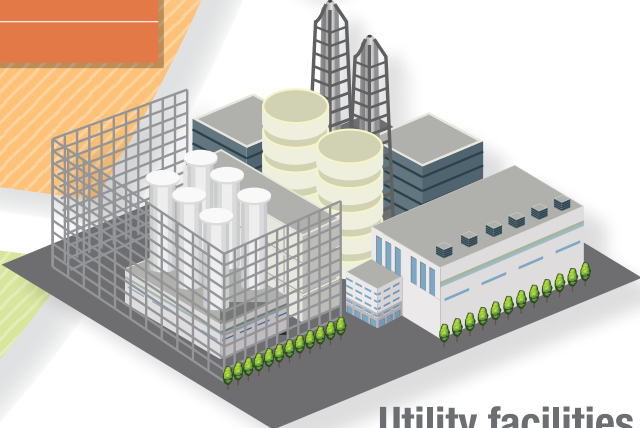


Medium-voltage distribution panels



Substations

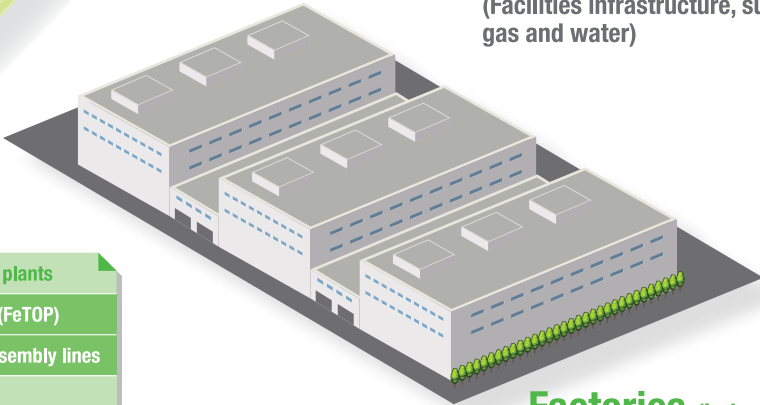
- Deterioration diagnosis services for substation equipment
- Diagnosis services for 3.6kV cables
- Deterioration diagnosis for power cables



Utility facilities

(Facilities infrastructure, such as electricity, gas and water)

- Water supply equipment
- Drainage equipment
- Steam equipment
- Lighting equipment
- Electric power application equipment
- Monitoring and control equipment
- Instrumentation equipment



Factories (industrial plants)

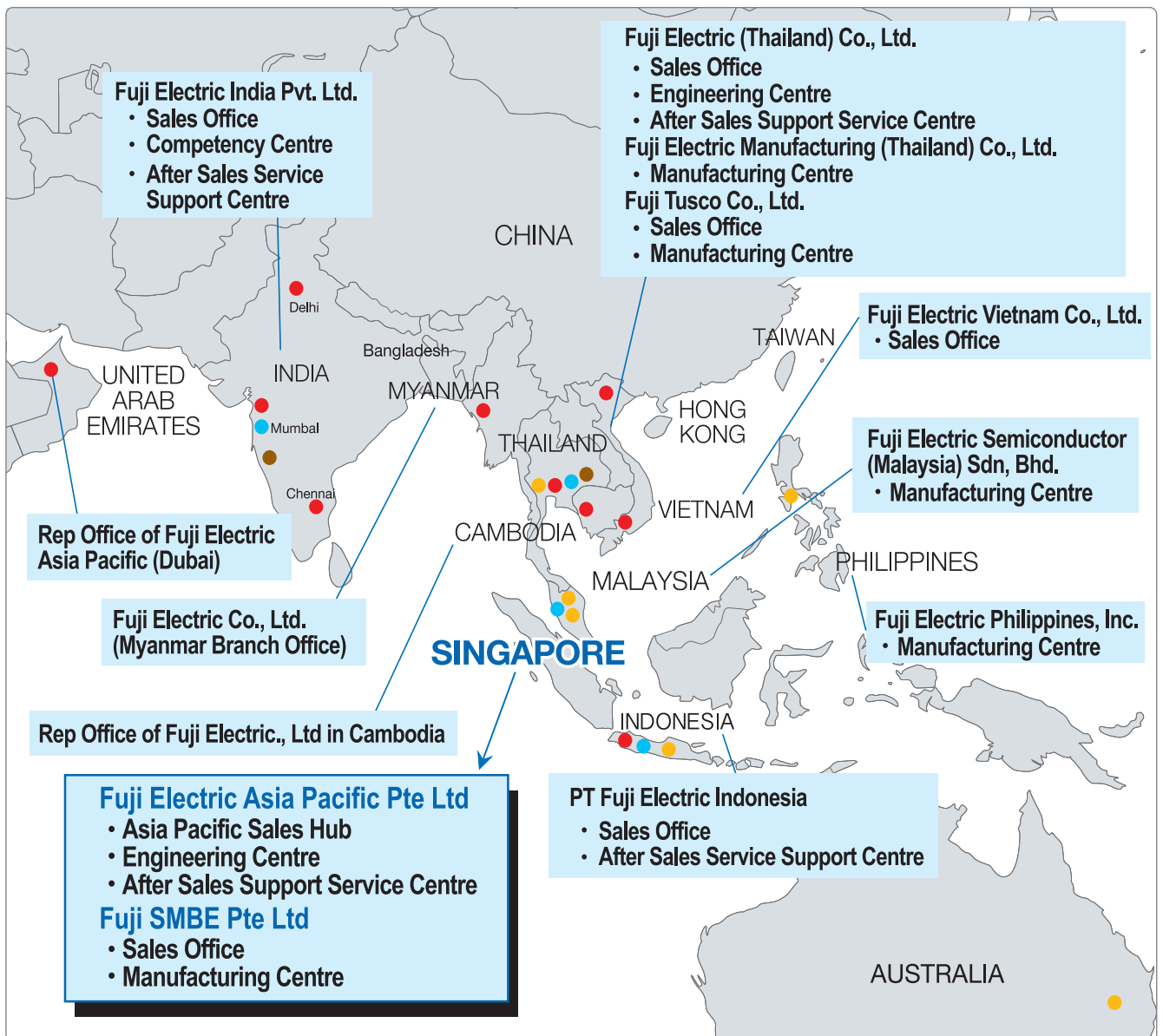
- Controllability diagnosis services for industrial plants
- Fuji electric total optimization system for EMS (FeTOP)
- Analysis support system for processing and assembly lines
- f(s)NISDAS

Fuji Electric's Presence in Asia Pacific

Established since 1923, Fuji Electric group has made broad contributions to the world industrial and social infrastructure.

With it's 90 years of accumulated technology and experience, Fuji Electric is capable of responding to Asia costumers' need promptly through support from different department of Sales, Engineering, Manufacturing and Technical support in Asia.

With strong connection and collaboration Fuji Electric Asia Pacific have is believed to meet the diverse needs of customers around the world.



- Manufacturing centre
- Sales centre
- After sales service support centre
- Engineering (Competency) centre

Global Presence

- Fuji Electric Co., Ltd. (Headquarter/Japan)
- Fuji Electric (China) Co., Ltd.
- Fuji Electric Korea Co., Ltd.
- Fuji Electric Taiwan Co.,Ltd.
- Fuji Electric Corp. of America
- Fuji Electric Europe GmbH

FUJI ELECTRIC ASIA PACIFIC PTE LTD

151 Lorong Chuan #02-01A, New Tech Park
Singapore 556741
Tel : (65) 6533-0014 Fax : (65) 6533-0021
Website : www.sg.fujielectric.com
Email : sales@fap.fujielectric.com

Asia Network

INDIA

FUJI ELECTRIC INDIA PVT LTD
409-410, Meadows Sahar Plaza, Andheri Kuria Road,
J.B. Nagar, Andheri (E) Mumbai 400-059, India
Tel : (91) 22-4010-4870 Fax : (91) 22-4010-4872

THAILAND

FUJI ELECTRIC (THAILAND) CO., LTD
889 Thai CC Tower, 11th Floor, Room No.114-6,
South Sathorn Road, Yannawa, Sathorn, Bangkok
Tel : (66) 2210-0615 Fax : (66) 2675-6641

MYANMAR

FUJI ELECTRIC CO., LTD. (MYANMAR BRANCH OFFICE)
Room 403, Yuzana Hotel, 130 Shwe Gon Taing Road,
Bahan Township, Yangon, MYANMAR
Tel : (95) 1-860-3395

INDONESIA

PT FUJI ELECTRIC INDONESIA
Gedung Sucaco 2nd Floor, Kebon Sirih Raya
No.71 PO Box4872 Kebon Sirih, Jakart Pusat, 10340
Tel : (62) 21-398-43211 Fax : (62) 21-398-43218

VIETNAM

FUJI ELECTRIC CO., LTD. Hanoi Rep. Office
204 Unit, 2nd Floor, Tung Shing Square,
Ngo Quyen Street, Hoan Kiem Dist. Hanoi, Vietnam
Tel : (84) 4-3935-1593 Fax : (84) 4-3935-1596

CAMBODIA

REP. OFFICE OF FUJIELECTRIC CO., LTD. (CAMBODIA)
6F, Phnom Penh Tower. #445, Monivong Blvd.
(St. 93/232) • Sangkat Boeung Pralit, Khan 7 Makara •
Phnom Penh, CAMBODIA
Tel : (855) 23-964-070

Global Network

HEAD OFFICE

FUJI ELECTRIC CO., LTD

Gate City Ohsaki, East Tower, 11-2, Osaki 1-Chome
Shinagawa-ku, Tokyo 141-0032, Japan
Tel : (81) 3-5435-7111 Fax : (81) 3-5435-7486

TAIWAN

FUJI ELECTRIC TAIWAN CO., LTD

9F-1, No.111, Sung Chiang Road, Taipei, Taiwan
Tel : (886) 2-2511-1820 Fax : (886) 2-2511-1830

USA

FUJI ELECTRIC CORP. OF AMERICA

50 Northfield Avenue Edison, NJ 08837, U.S.A.
Tel : (1) 732-560-9410 Fax : (1) 732-457-0042

CHINA

FUJI ELECTRIC (CHINA) CO., LTD
F27, International Corporate City,
No.3000 Zhongshan North Road,
Shanghai 200063, The People Republic Of China
Tel : (86) 21-5496-1177 Fax : (86) 21-6422-4662

KOREA

FUJI ELECTRIC KOREA CO., LTD
16F Shinsong Building, 25-4 Youido-dong
Yuongdungpo-gu, Seoul
Tel : (82) 2-780-5011 Fax : (82) 2-783-1707

GERMANY

FUJI ELECTRIC EUROPE GmbH
Geothering 58, 63067 Offenbach am Main,
Germany
Tel : (49) 69-6690290 Fax : (49) 69-66902958

Factory Network

SINGAPORE

FUJI SMBE PTE LTD

No.15 Senoko Avenue Singapore 758305
Tel: (65) 6756-0988 Fax: (65) 6756-6097
Website: www.smbef.fujielectric.com
Email: sales@smbef.fujielectric.com

MALAYSIA

FUJI SMBE BRIGHTEN SDN BHD

3338, Jalan Pekeliling Tanjung 27,
Kawasan Perindustrian Indahpura,
81000 Kulajaya, Johor, Malaysia
Tel: (607) 660 6029 Fax: (607) 660 6027/8

MALAYSIA

FUJI SMBE MANUFACTURING SDN BHD

PLO 131, Jalan Cyber5, Kawasan Perindustrian
Senai 3, 81400 Senai, Johor, Malaysia
Tel: (607) 5983 818 Fax: (607) 5983 815

MALAYSIA

FUJI ELECTRIC SEMICONDUCTOR (MALAYSIA) SDN, BHD.

Lot 4, Industrial Zone Phase 1, Kulim Hi-Tech
Industrial Park, 09000 Kulim,
Kedah Darul Aman, MALAYSIA
Tel (60) 4-494-5800 Fax: + 604-494-5993
FUJI ELECTRIC (MALAYSIA) SDN. BHD.
Tel : (60) 4-403-1111 Fax : (60) 4-403-1496

AUSTRALIA

FUJI SMBE HARWAL PTY LTD

Unit D3, Lane Cove Business Park,
16 Mars Road, Lane Cove, NSW 2066, Australia
Tel: (61)2-9420-7777 Fax: (61)2-9420-7700
Website: www.smbefharwal.fujielectric.com
Email: sales@smbefharwal.fujielectric.com

AUSTRALIA

FUJI SMBE MACQUARIE PTY LTD

Unit 3, 171-175 Newton Road, Wetherill Park,
NSW 2164, Australia
Tel: (61)2-9733-0600 Fax: (61) 2-9733-0610
Website: www.smbefmacquarie.fujielectric.com
Email: sales@smbefmacquarie.fujielectric.com

INDONESIA

PT FUJI SMBE INDONESIA

Jl. Tekno Boulevard Blok A3 No.12 and 12A
Kawasan Industri Jababeka Tekno Park
Desa Pasir Gombang Kecamatan Cikarang
Ultra Cikarang 17530, Indonesia

THAILAND

FUJI ELECTRIC MANUFACTURING (THAILAND) CO., LTD.

60/79 Moo 19 Navanakorn Ind. Est.
Phase2 Klong Nueng, Klong Luang,
Pathumthani 12120 Thailand
Tel : (66) 2-909-5998 Fax : (66) 2-909-5595

THAILAND

FUJI TUSCO CO., LTD.

612 Moo4, Bangpoo Industrial Estate Soi8A,
Pattana1 Rd.A.Muang, Samutprakarn 10280
Te : (66) 2-324-0110 Fax : (66) 2-324-0235

PHILIPPINES

FUJI ELECTRIC PHILIPPINES, INC.

107 Enterprize Drive, Special Export
Processing Zone II, Carmelray Industrial Park,
Canlubang, Calamba, Laguna, PHILIPPINES
Tel : (63) 2-844-6183 Fax : (63) 2-844-6196



This mark symbolizes
the commitment of Fuji Electric
to environmental protection.

 Fuji Electric Asia Pacific Pte. Ltd.

151 Lorong Chuan #02-01A, New Tech Park
Singapore 556741

Website : www.sg.fujielectric.com

Email : sales@fap.fujielectric.com

Tel : (65) 6533-0014 Fax : (65) 6533-0021