

Online Double Conversion UPS

Falcon 8500

UPS 10 KVA - 300 KVA



The Falcon 8500 has been developed by a World Class R&D team, with over three decades of power electronics experience for the harsh power and site conditions prevalent in India and other developing countries.

Falcon 8500 shares the characteristics of the Falcon birds which is a rugged and an incredible flying machine and one of the fastest creature on the planet with the ability to move and change direction very quickly. Similarly, the Falcon UPS is an incredible power protection system designed and manufactured in India to global IEC standards.

Highlights of Falcon 8500 UPS at a Glance

Flexibility

- Inbuilt Isolation Transformer
- Compatible for medical imaging equipment requiring low mains resistance
- Compatible with all types of loads including regenerative loads, lifts, escalators and lighting loads
- 1+1 parallel redundant configuration with Common battery bank
- Rectifier current limit setting for optimised upstream infrastructure
- Parallel upto 3 units for capacity or redundancy

Reliability

- Operating temperature of 0-40°C with special attention in component selection and design to improve reliability
- Advanced battery management techniques to improve battery life with three stage charging and with auto equalizing charge at predefined intervals
- Advanced thermal protection of IGBT using on chip built-in temperature sensor.

Total Cost of Ownership

- Intelligent Eco mode operation with an efficiency of upto 99%
- Long Life power electronics grade capacitors



Applications

- Infrastructure
- Commercial Offices & Malls
- Lifts & Escalators
- Medical Imaging Equipment
- Engineering Industry
- Process Industry

Reliability

The Falcon UPS family is designed for harsh conditions seen in India, Middle East, Africa and ASEAN countries, Like high ambient temperatures, very high humidity, wide input voltage fluctuations, and operation on DG Sets during powercuts which are not seen in many parts of the world.

The Falcon UPS is designed for continuous operation at 40°C ambient temperature with special attention to details in component selection and design to improve reliability and life under demanding conditions. Complexity of control wiring within the UPS has been simplified using CANBUS communication protocol for higher reliability and trouble - free operations.

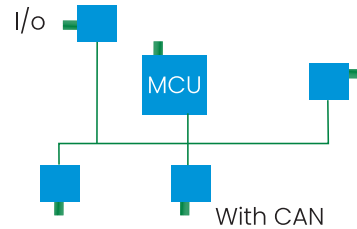
Flexibility

Falcon 8500 deploys a sophisticated control circuit with power walk-in function to achieve progressive rectifier start-up to avoid the impact of inrush current on the upstream breakers and to avoid the step loading on generators.

Falcon 8500 has also been designed with Rectifier current Limit function, taking into account the short term momentary loads which allows the system to work in parallel with the battery and to reduce the maximum demand on the mains or avoids the need to enhance the maximum demand sanctioned by the utility provider or generator.

Inbuilt isolator switches for input, output, bypass and maintenance bypass gives the flexibility to connect the cables directly on the UPS system without any external distribution panel requirement.

■ **CANBUS Communication**



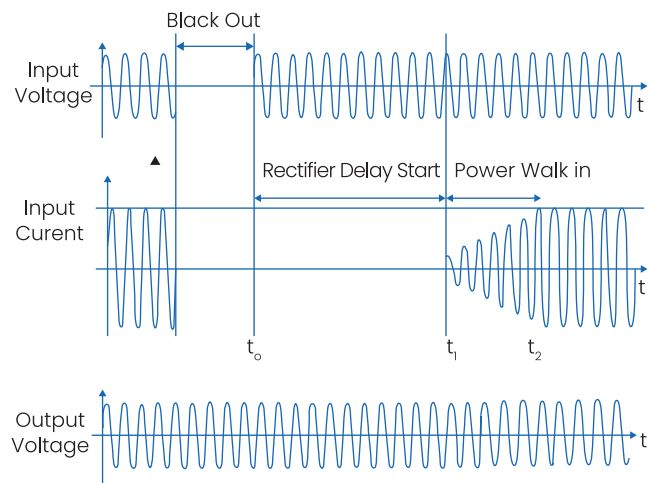
Simplified CANBUS Communication Protocol

■ **Special Design Heat Sink**

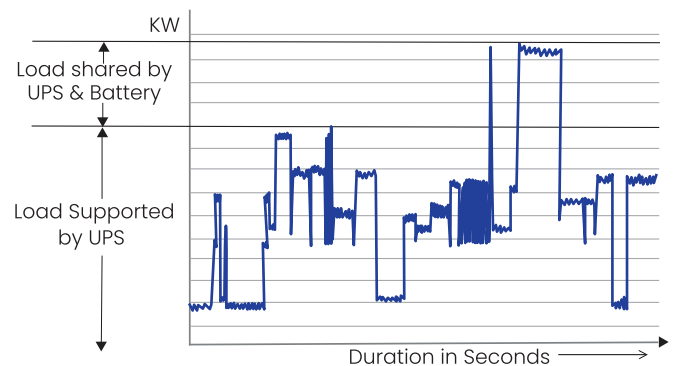


Special Heat Sinks with large surface area for effective heat dissipation in small volume.

■ **Rectifier Delay Start**



■ **Rectifier Current Limit**



Compatibility with Loads

An advanced PWM (Pulse Width Modulation) SVM (Space Vector Modulation) digital control technique, to modulate the inverter, provides fast transient response with high efficiency. SVM also allows the UPS to adapt the PWM switching to different loading conditions such as: partial load, full load, linear load, non-linear load, static load, pulsating load.

Falcon 8500 comes in-built* with Special IGBT controller for adding external breaking resistors to make the UPS compatible with regenerative loads like Metal forming and Elevators.

Easy Installation

Falcon 8500 has a compact footprint and requires a very small for installation.

The Human Machine Interface (HMI) is intuitive and user friendly with a LCD screen and LED mimics.

Total Cost of Ownership

Falcon 8500 can be operated upto 40°C (ambient temperature) without precision air conditioning as required by most UPS. This helps large saving for the customer in CapEx and OpEx costs associated with cooling required for the UPS. The UPS batteries must be kept in a separate room for safety and temperature must be maintained below 27°C to maximize the life of the batteries.

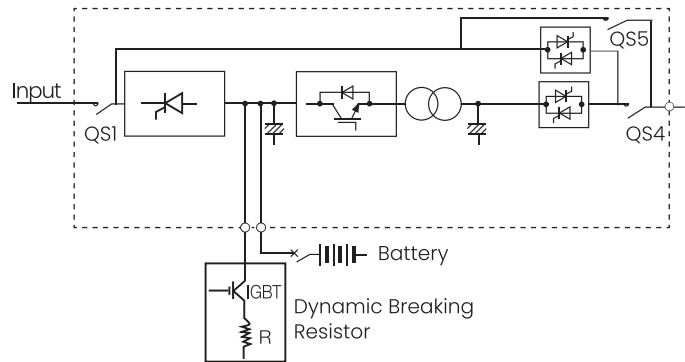
Long Life Power Electronic grade capacitors are being used in the UPS which reduces need for replacement cost of capacitors during the life time of the UPS.

Intelligent High Efficiency

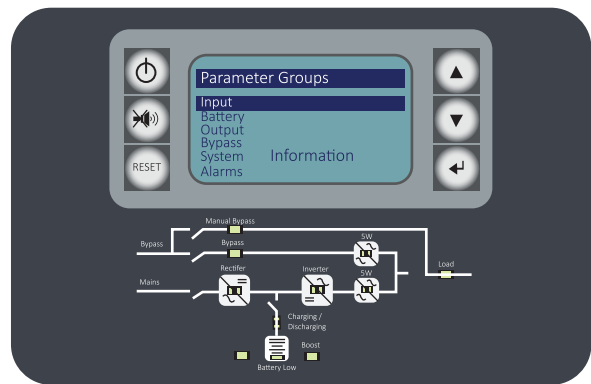
Eco Mode operations which can be enabled for energy savings (Upto 99% Efficiency). The firmware, tested to Indian power conditions monitors the quality of the input power, and enables the Eco Mode operations on bypass only when input power conditions are stable. Other wise the UPS transfers back to double conversion mode in less than 5ms whereby the reliability of power is ensured to the critical load.

*inbuilt upot 20KVA

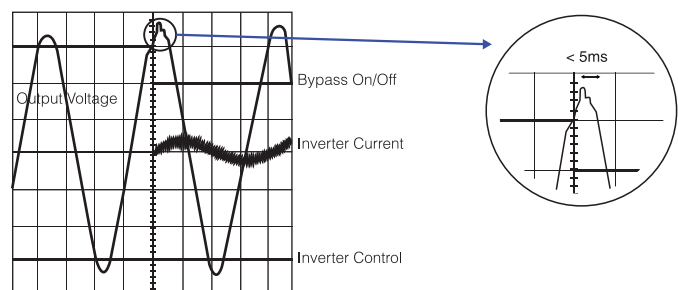
■ UPS with DBR



■ User-Friendly HMI



■ Eco mode of Operation

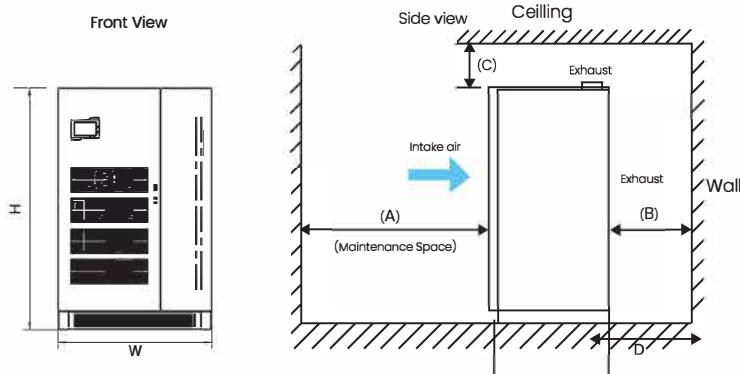


Technical Specification
Online Double Conversion UPS
Falcon 8500

UPS 10KVA - 300KVA

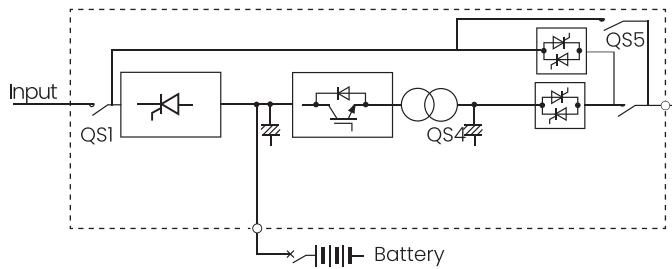
General		Falcon 8500														
Capacity		10KVA	20KVA	30KVA	10KVA	20KVA	30KVA	40KVA	60KVA	80KVA	100KVA	120KVA	160KVA	200KVA	250KVA	300KVA
Phase		3 Phases + Neutral + Ground														
Nominal Input Voltage		400/415AC (380 VAC Optional)														
Input Range		353-477V														
Nominal Input Frequency		50 / 60 Hz														
Frequency Range		47-53 Hz / 56.4-63.6Hz														
Output																
Voltage		230/240V (220V Single Phase Optional)			400V/415VAC (380VAC Optional)											
Voltage Regulation		+/-1%														
THDu		<=2% for linear load , <=5% for Non linear load														
Power Factor		Nominal 0.8 (0.6 to unity within KVA & KW rating)														
Crest		3:1														
Overload Capability		110% for 60 mins,125% for 10 mins,150% for 1mins														
System																
System Efficiency		89%	89%	89%	89%	89%	92%	92%	92%	92%	93%	93%	93%	93%	93.5%	93.5%
Display		128X64 Graphics LCD & Mimic														
IP Class		IP20														
Interface		Optional:Dry Contacts, SNMP														
Operation Temperature		0~40°C														
Storage Temperature		Storage temperature 0-70°C														
Relative Humidity		0~95%(Non - Condensing)														
Noise		<= 65dBA										<= 68dBA				
Altitude of Operation		1000m; 1% derating per 100m. Max 2000M @30°C														
Isolation Transformer		Inbuilt														
Physical																
Capacity		10KVA	20KVA	30KVA	10KVA	20KVA	30KVA	40KVA	60KVA	80KVA	100KVA	120KVA	160KVA	200KVA	250KVA	300KVA
Dimension in mm	Width	500	500	500	500	500	500	500	600	600	600	600	1000	1200	1200	1200
	Depth	700	700	700	700	700	800	800	955	955	955	955	900	1000	1000	1000
	Height	1010	1010	1010	1010	1010	1088	1088	1400	1400	1400	1400	1750	1950	1950	1950
Weight in Kgs	300	300	350	300	300	350	350	550	600	650	700	1250	1400	1700	1700	
Colour		RAL 9005(Front Door) , RAL 7016 Texture - Anthracite Grey(all other sides)														
Clearance Requirement																
kVA	10	20	30	10	20	30	40	60	80	100	120	160	200	250	300	
Front Side (A)	500	500	500	500	500	500	500	500	500	500	500	1000	1000	1000	1000	
Back Side (B)	400	400	400	400	400	400	400	400	400	400	400	600	600	600	600	
Top Side (C)	300	300	300	300	300	500	500	500	500	500	500	500	500	500	500	
Both Side	300	300	300	300	300	300	300	300	300	300	300	600	600	600	600	
Applicable Standards																
Safety		IEC 62040-1														
EMC		IEC 62040-2														
Performance		IEC 62040-3														

* Specifications are subject to change

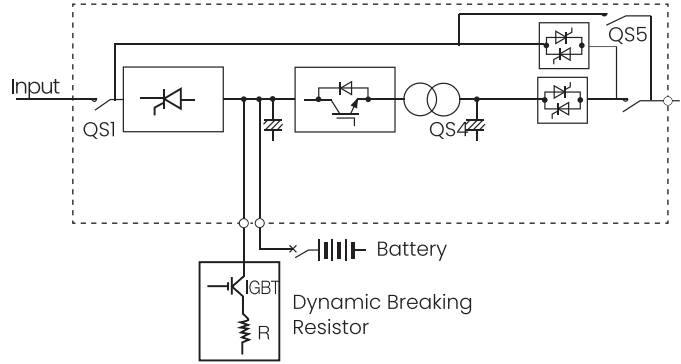
UPS Main Unit


Falcon 8500 UPS Configuration Examples

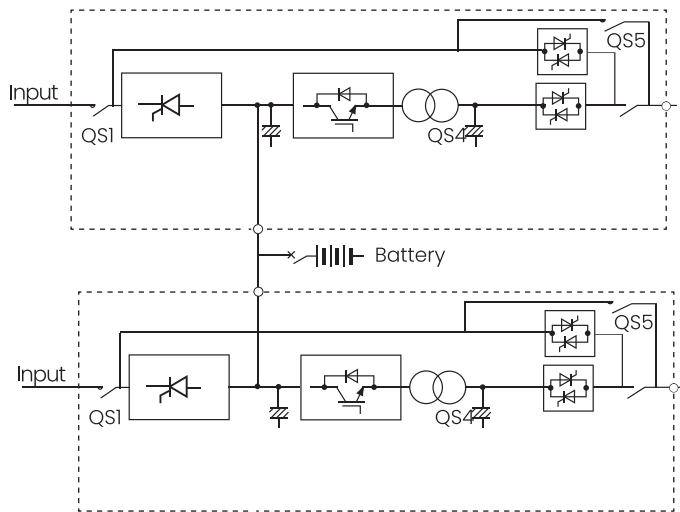
■ **Standalone UPS Configuration**



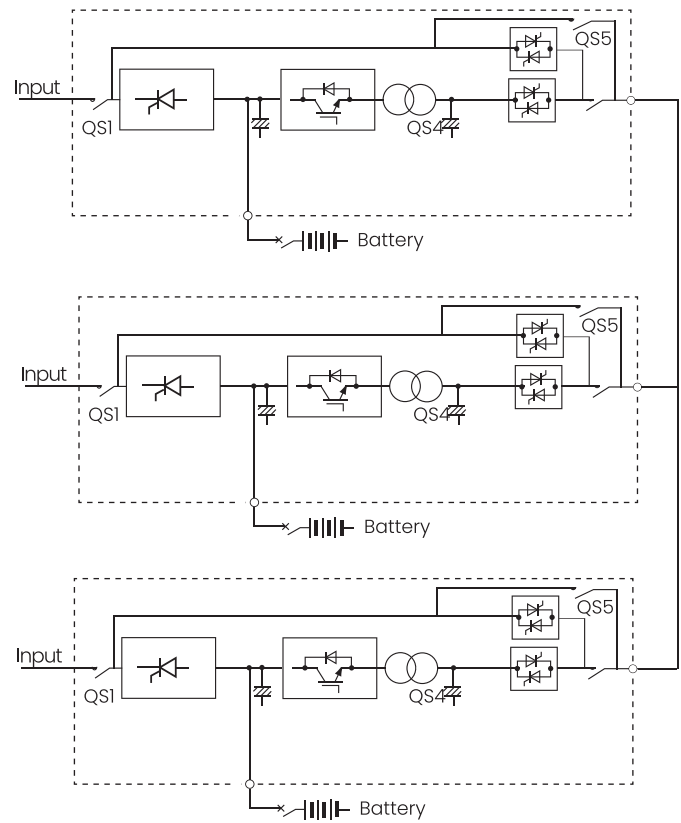
■ **Standalone UPS with DBR**

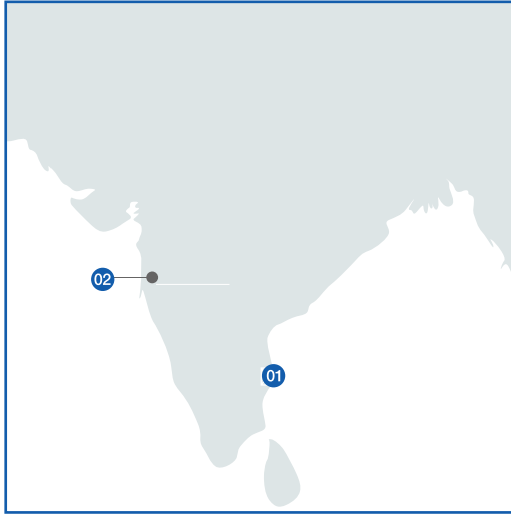


■ **1+1 Parallel UPS with Common Battery Bank**



■ **Parallel UPS for Capacity or redundancy**





South Asia

● Fuji Electric India Pvt. Ltd.

01 Head Office & Chennai Factory
119,120,120A,
Electrical and Electronics Industrial Estate,
Perungudi, Chennai - 600 096,
Tamil Nadu, India

02 Pune Factory

Survey No. 36/1/1,36/3/1,27/1/3,
Taluka Haveli, Landmark - Handewadi Chowk
Pune - 412308
Maharashtra, India



Southeast Asia

03 Fuji Electric (Thailand) Co., Ltd.

43 Thai CC Tower, 11th FL.
Room 1st14-9, South Sathorn Road,
Yannawa, Sathorn, Bangkok , 10120,
Thailand
Tel : +66-2210-0615
Website: <https://www.th.fujielectric.com>

04 Fuji Electric Manufacturing (Thailand) Co. Ltd

118/2 Moo 18 Klong Nueng, Klong Luang,
PathumThani 12120 Thailand
Website: <https://www.th.fujielectric.com>

05 Fuji Electric Sales Malaysia Sdn. Bhd.

Unit #13A-15, Menara Q Sentral, No. 2A,
Jalan Stesen Sentral 2, Kuala Lumpur Sentral,
50470 Kuala Lumpur W.P., Malaysia
Tel : +60-(0)3-2780-9980
Website : <https://www.my.fujielectric.com>

06 Fuji Electric Asia Pacific Pte. Ltd.

151 Lorong Chuan #03-01/01A,
New Tech Park Lobby A,
Singapore 556741
Tel : +65-6533-0014
Website : <https://www.sg.fujielectric.com>

07 Fuji SMBE Pte. Ltd.

No.15 Senoko Avenue
Singapore 758305
Tel: +65 756 0988
website: <http://smbe.fujielectric.com>

08 PT Fuji Electric Indonesia

Wisma 46 - Kota BNI , 12TH Floor Suite #12.05-07,
Jalan Jenderal Sudirman Kav.1 Jakarta Pusat 10220,
Indonesia
Tel : +62-21-574 4571
Website : <https://www.id.fujielectric.com>

09 Fuji Electric Vietnam Co., Ltd.

Room 401,41h Floor , Corner Stone Building,
16 Phan Chu Trinh, Hoan Kiem, Ha Noi , Vietnam
Tel : +84-24-3935-1593
Website : <https://www.vn.fujielectric.com>

10 Fuji Electric Sales Philippines Inc.

Unit F , 8TH Floor, Inoza Tower, Lot 8 & 11, Block 32 ,
40th Street, North Bonifacio, BGC, Tagig City
Tel : +63-2-541-8321
Website : <https://www.ph.fujielectric.com>

11 Fuji Electric Co., Ltd.(Myanmar Branch Office)

Room No.311, 3rd Floor, Prime Hill Business Square,
No. 60, Shwe Dagon Pagoda Road, Dagon Township,
Yangon, Myanmar
Tel : +95-1-8382714
Website : <https://www.fujielectric.com>

12 Fuji Electric Co., Ltd.

7th Floor Vattanac Capital, No. 66 Preah Manivong Blvd,
Sangkat Wat Phnom, Khan Daun Penh, Phnom Penh,
Cambodia
Tel : +855-(0)23-964-070
Website : <https://www.fujielectric.com>