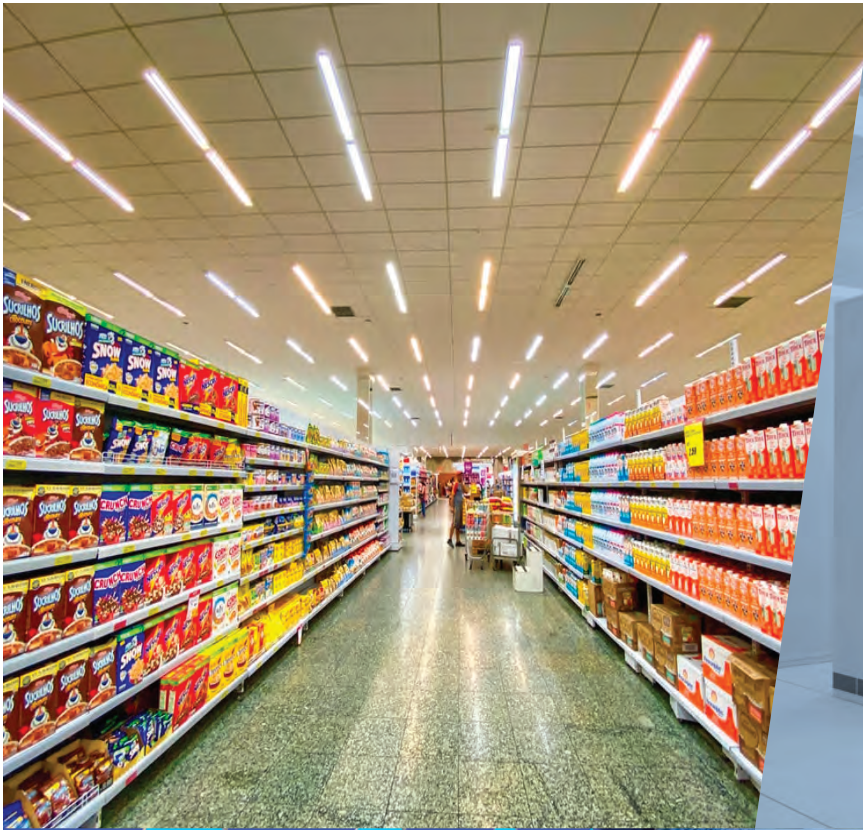


Online Double Conversion UPS

Finch UPS

UPS 1 KVA -10 KVA



FINCH PW

UPS - 1 KVA - 10 KVA

Single Phase Input & Single Phase Output

On Line Double Conversion UPS

Finch PW is specifically designed for operation in poor power quality areas. Finch PW provides high power density with long backup time in compact size. It's ideal for ATMs, banking and other business critical applications where a higher backup time is required.

Topology

- Online double conversion UPS
- Input power factor corrector 0.99(PFC)
- Automatic bypass, allow to transfer the load to the mains in case of overload or internal fault
- Single Phase Input & Output

Flexibility

- Configurable as Single Phase Input & Output or Three Phase Input and Single Phase output on 10KVA
- Hot standby Configuration to ensure the availability of Quality power to mission critical applications on 6KVA
- Battery cold start feature allows UPS to be powered on from the battery without utility
- Inbuilt Manual bypass in 6&10KVA to facilitate concurrent maintenance without disturbing the loads
- Compact and reduced foot print with inbuilt battery on 1 - 6KVA

Total Cost of Ownership

- Wide tolerance of the input voltage reduces switchovers to battery mode,prolonging battery life
- Green and energy saving: AC/AC efficiency upto 98% in ECO Mode on 1-3KVA



Technical Specification
Finch PW

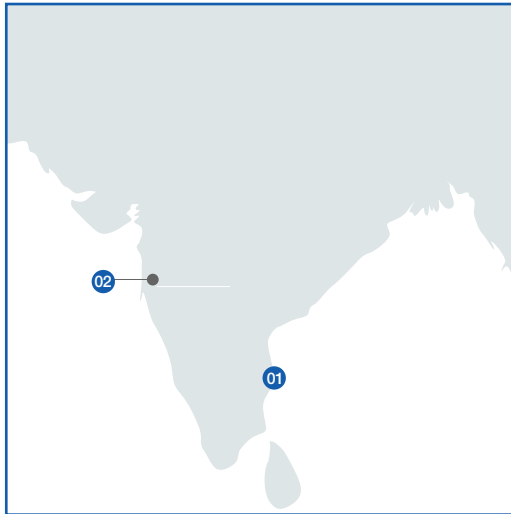
1 KVA - 10 KVA

General		Finch PW				
Configuration	Single Phase with Ground					
Capacity	1KVA	2KVA	3KVA	6KVA	10KVA	
Capacity	800W	1.6KW	2.4KW	4.8KW	8KW	
Input						
Nominal Voltage	200/208/220/230/240VAC					
Input Voltage Range	110-300VAC (1-Phase) @ 50% Load or 176-300VAC (1-Phase) @ 100% Load					
Frequency Range	40 Hz ~ 70 Hz					
Power Factor	,0.99 @ Nominal Voltage (100% Load)					
Output						
Output Voltage	200/208/220/230/240VAC					
Voltage Regulation	± 1 %					
Frequency Range (Synchronized Range)	+/-3 Hz		+/-4 Hz			
Frequency Range (Batt. Mode)	50 Hz ± 0.25 Hz / 60 Hz ± 0.3 Hz		50/60 Hz ± 0.1 Hz			
Crest Factor	3:1					
Harmonic Distortion	,3 % THD (Linear Load) ,6 % THD (Non-Linear Load)		,3 % THD (Linear Load) ,5 % THD (Non-Linear Load)			
Waveform	Pure Sinewave					
Overload	105% - 110% : 10mins; 110% - 130% - 1 min; >130% - 3 sec					
Electrical Outlet	Input	1XC14 IEC Socket	1 XC20 IEC Socket	Terminal Block		
	Output	3XC13 IEC Socket	6 XC13 IEC Socket	Terminal Block		
Efficiency						
AC Mode	88%	88%	90%	92%	91%	
Battery						
Built in Battery	Battery Type	12 V / 9Ah	12 V / 9 Ah	12 V / 9 Ah	12 V / 9 Ah	NA
	Numbers	2	8	8	16	NA
	Typical Recharge Time	4 hours recover to 90% capacity			9 hours recover to 90% capacity	
	Charging Current (max)	1A			1A / 2A	1A / 2A /4A
	Typical Backup Time**	4 mins	8 mins	5 mins	5 mins	NA
LCD	Load level, Battery level, AC mode, Battery mode, Bypass mode, and Fault indicators					
Physical						
Standard Model	Dimension, D x W x H(mm)	280 x 145 x 225	425 x 190 x 335	425 x 190 x 335	410 x 190 x 690	400 x 195 x 335 ⁽¹⁾
	Net Weight (kgs)	9.8	27.6	27.6	61	15 ⁽¹⁾
Environment						
Humidity	20-90 % RH @ 0-40°C (Non-condensing)					
Noise Level @ 1 Meter	Less than 50dB		Less than 55dB		Less than 60dB	
Management						
Smart RS-232 / USB	Support Windows®2000/2003/XP/Vista/2008, Windows®7/8, Linux and MAC					
Optional	SNMP, Modbus (RS485) and Potential Free Contact					
Applicable Standards	IEC 62040-1,IEC 62040-2,IEC 62040-3,CE					

*Specifications are subject to change

** at 80% Load

(1) without Battery



South Asia

- Fuji Electric Inida Pvt. Ltd.
 - 01 Head Office & Chennai Factory
119,120,120A,
Electrical and Electronics Industrial Estate,
Perungudi, Chennai - 600 096,
Tamil Nadu, India
 - 02 Pune Factory
Survey No. 36/1/1,36/3/1,27/1/3,
Taluka Haveli, Landmark - Handewadi Chowk
Pune - 412308
Maharashtra, India

Southeast Asia

- 03 Fuji Electric (Thailand) Co., Ltd.
43 Thai CC Tower, 11th FL.
Room 1st14-9, South Sathorn Road,
Yannawa, Sathorn, Bangkok , 10120,
Thailand
Tel : +66-2210-0615
Website: <https://www.th.fujielectric.com>
- 04 Fuji Electric Manufacturing (Thailand) Co. Ltd
118/2 Moo 18 Klong Nueng, Klong Luang,
PathumThani 12120 Thailand
Website: <https://www.th.fujielectric.com>
- 05 Fuji Electric Sales Malaysia Sdn. Bhd.
Unit #13A-15, Menara Q Sentral, No. 2A,
Jalan Stesen Sentral 2, Kuala Lumpur Sentral,
50470 Kuala Lumpur W.P., Malaysia
Tel : +60-(0)3-2780-9980
Website : <https://www.my.fujielectric.com>
- 06 Fuji Electric Asia Pacific Pte. Ltd.
151 Lorong Chuan #03-01/01A,
New Tech Park Lobby A,
Singapore 556741
Tel : +65-6533-0014
Website : <https://www.sg.fujielectric.com>
- 07 Fuji SMBE Pte. Ltd.
No.15 Senoko Avenue
Singapore 758305
Tel: +65 756 0988
website: <http://smbe.fujielectric.com>
- 08 PT Fuji Electric Indonesia
Wisma 46 - Kota BNI , 12TH Floor Suite #12.05-07,
Jalan Jenderal Sudirman Kav.1 Jakarta Pusat 10220,
Indonesia
Tel : +62-21-574 4571
Website : <https://www.id.fujielectric.com>
- 09 Fuji Electric Vietnam Co., Ltd.
Room 401,41h Floor , Corner Stone Building,
16 Phan Chu Trinh, Hoan Kiem, Ha Noi , Vietnam
Tel : +84-24-3935-1593
Website : <https://www.vn.fujielectric.com>
- 10 Fuji Electric Sales Philippines Inc.
Unit F , 8TH Floor, Inoza Tower, Lot 8 & 11, Block 32 ,
40th Street, North Bonifacio, BGC, Tagig City
Tel :+63-2-541-8321
Website : <https://www.ph.fujielectric.com>
- 11 Fuji Electric Co., Ltd.(Myanmar Branch Office)
Room No.311, 3rd Floor, Prime Hill Business Square,
No. 60, Shwe Dagon Pagoda Road, Dagon Township ,
Yangon, Myanmar
Tel : +95-1-8382714
Website : <https://www.fujielectric.com>
- 12 Fuji Electric Co., Ltd.(Cambodia Representative Office)
7th Floor Vattanac Capital, No. 66 Preah Manivong Blvd,
Sangkat Wat Phnom, Khan Daun Penh, Phnom Penh,
Cambodia
Tel :+855-(0)23-964-070
Website : <https://www.fujielectric.com>

